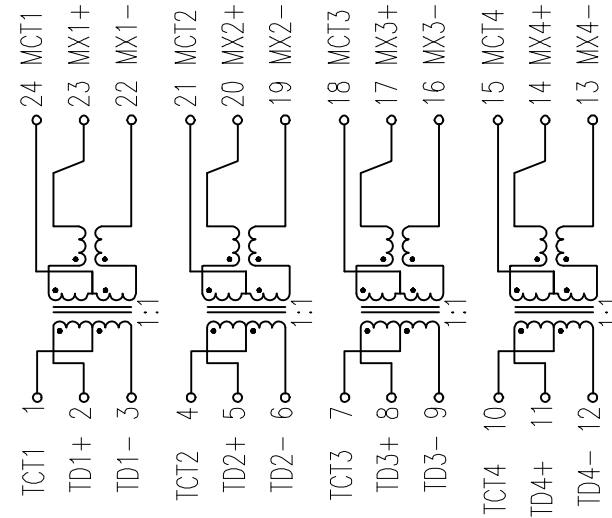


SUGGESTED PAD LAYOUT

UNLESS OTHERWISE SPECIFIED ALL TOLERANCES ARE : XX.XX ±0.25mm
0.XX ±0.05mm

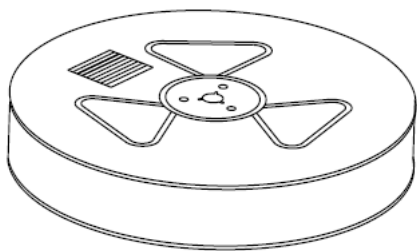
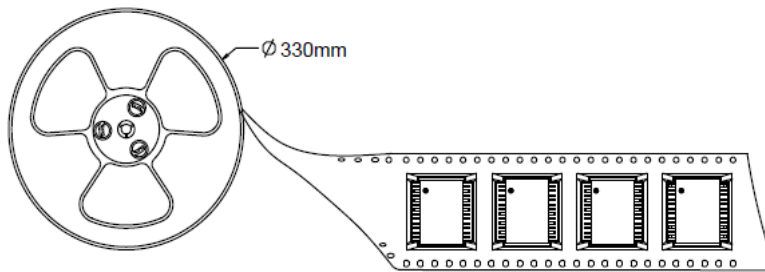
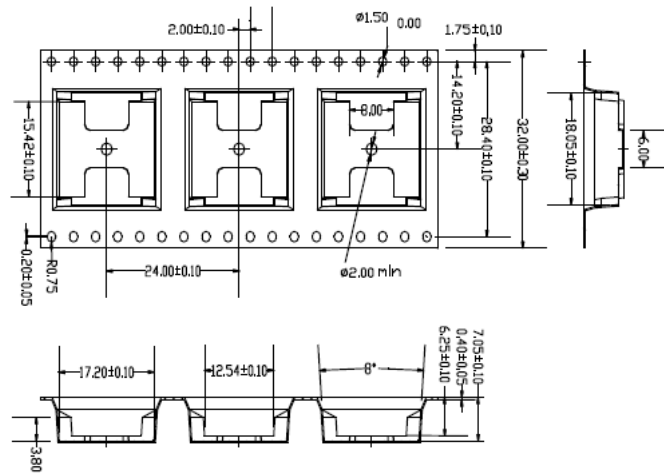


ELECTRICAL CHARACTERISTICS @25°C :

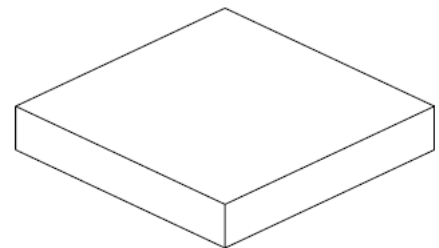
- INSULATION HI-POT : (5kVrms, 1mA, 2Sec) : PRI / SEC
- TURN RATIO (±5%) : TX = 1CT : 1CT
RX = 1CT : 1CT
- OCL : 350uH MIN. 100KHz/0.1V AT 8mA DC BIAS
- INSERTION LOSS : 1-100MHz = -1.2dB MAX.
- RETURN LOSS (dB MIN.) :
1-30MHz 40MHz 50MHz 60-80MHz 100MHz
-18 -14.4 -13.1 -10 -8
- DIFFERENTIAL TO COMMON MODE REJECTION (dB MIN.) :
30MHz 60MHz 100MHz
-43 -37 -33
- CROSS TALK (dB MIN.) :
30MHz 60MHz 100MHz
-45 -40 -35
- OPERATING TEMPERATURE RANGE : 0°C ~+85°C
- RoHS COMPLIANT

| | | | | | | | | |
|-----------|--|------------|---------|-------|-------|----------|----------|--------------|
| D | CHANGE OPERATING TEMPERATURE | 02/23/2024 | SHIRLEY | BETTY | BETTY | AOEM | TITLE | SINGLE |
| C | CHANGE DIM. & ELECTRICAL CHARACTERISTICS | 12/13/2018 | SHIRLEY | BETTY | BETTY | | DWG. NO. | 1000 BASE-T |
| B | CHANGE PRINT | 11/17/2015 | SHIRLEY | BETTY | BETTY | | | ATPL-440R |
| | RELEASE | 05/22/2013 | SHIRLEY | BETTY | BETTY | UNITS: | SAFETY | SHEET 1 of 1 |
| NO: | DESCRIPTION | DATE | BY | CHK | APPD | M/M | P/N: | DRAW |
| REVISIONS | | | | | | 05/22/13 | | Shirley |

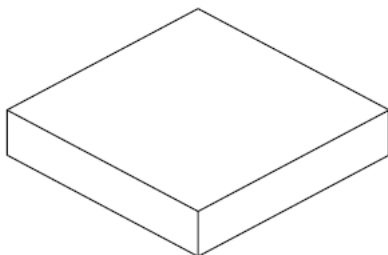
3. Package:



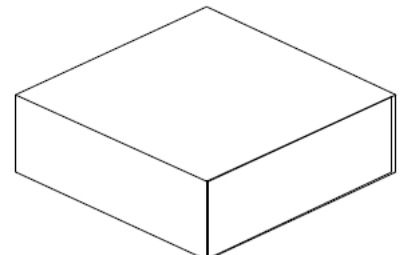
two reel



Inner Carton



five Inner Carton



Export Carton

Package Quantity:

One Reel=350Pcs

One Inner Carton=350*2=700Pcs

One Export Carton=700*5=3500Pcs

Pb-free Soldering Heat Withstanding Survey

